



Thursday, 2nd July 2015

Search



Development & Preservation Transportation Politics & Policy Media & Commentary About Advertise

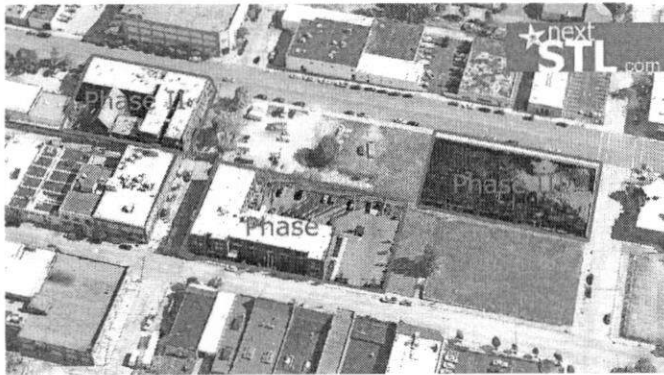
Salvation Army Continues \$60M Midtown Project with Phase III

June 25, 2015 Alex Ihnen Development & Preservation 3 Comments



According to Jacob Kirm at the St. Louis Business Journal, the Salvation Army Midland Division is set to break ground on phase III of it's \$60M Midtown development. The first phase, completed in 2012, included an \$8M, 48-unit apartment building for homeless veterans at 2933 Locust Street.

This past November we reported that the project appeared to be moving forward. At that time, phase II, the 3010 Apartments, were nearing completion. The former Harbor Light Center opened as 58 low-income apartments in February of this year.



According to the Business Journal, the latest building is a \$6M, three-story facility housing a clinic, counseling center and inpatient drug and alcohol treatment center. The building has been labeled as the Booth Center on previous master planning documents.

nextPOPULAR

- STLCOP Confirms 190K SF Multi-Use Building Set to Break Ground
- Salvation Army Continues \$60M Midtown Project with Phase III
- Plans Updated for 500,000 SqFt WU/BJC at CWE MetroLink Station
- Plans Progress for New BJC West County Hospital in Creve Coeur
- Groth Guides to the Neighborhoods of the City of St. Louis



St. Louis
 Cloudy
 Humidity: 78
69 F
 Wind: 8 km/h

2 Jul 2015 3 Jul 2015

63 F 80 F 66 F 82 F

@nextSTL

The next building to rise at @CortexSTL will be home to @techshop and more (FP Ave @ Boyle): <http://t.co/gSBT1ThBCu>

2 hours ago

Likes 18688 Followers

Retweet

nextGUIDES

79 neighborhoods
 5,603 photos
 1 city

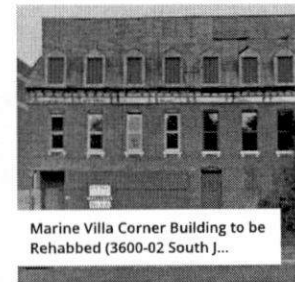
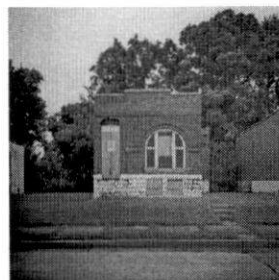
Facebook

Louis Hamilton, Chair of the St. Louis Taxi Commission may have signed off Twitter for the evening, but his deleted Tweet to another commissioner will be up all night:

17 hours ago

nextDEVELOPMENT

nextINSTAGRAM





Thursday, 2nd July 2015

Search



Development & Preservation Transportation Politics & Policy Media & Commentary About Advertise

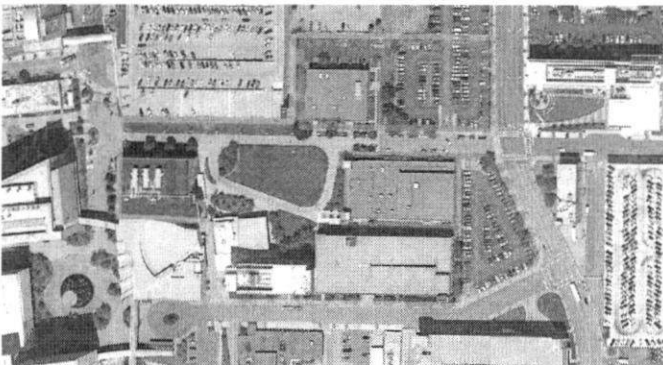
STLCOP Confirms 190K SF Multi-Use Building Set to Break Ground

June 24, 2015 Alex Ihnen Development & Preservation, Featured 19 Comments



In April we reported that the St. Louis College of Pharmacy was planning to build again, adding a second contemporary building to the Taylor Avenue streetscape. At that time, available renderings were characterized as early concepts. Today STLCOP has released refined renderings announcing a seven-story student center, residence hall and recreation facility.

Located at the northwest corner of Taylor Avenue and Parkview Place, the building is tentatively scheduled to be completed by December 2016. STLCOP chose Forum Studio of St. Louis as its architectural firm. PARIC Corporation will serve as general contractor. Demolition of Whelpley Hall will begin shortly to make way for the new building.



{STLCOP campus in yellow, building nearing completion in blue, new building in orange}

According to the press release, the 190,000 sf building will be home to many varied uses. The first floor will include a large dining hall, reception area, and gymnasium for STLCOP competitive sports. The second floor will have additional seating for the dining hall, meeting rooms, and an intramural gymnasium. A recreation center with a 200-meter, three-lane indoor track will be the main feature on the third floor.

The student center, including a success center and student support offices, will be on the fourth floor. The College's second residence hall with room for 220 beds will be on the fifth through seventh floors, nearly doubling the College's on-campus housing space.

A land swap in the last couple years with Washington University in St. Louis gave STLCOP a contiguous campus that allowed for the development of a long range master plan, which is now fully underway.

nextPOPULAR

- STLCOP Confirms 190K SF Multi-Use Building Set to Break Ground
- Salvation Army Continues \$60M Midtown Project with Phase III
- Plans Updated for 500,000 SqFt WU/BJC at CWE MetroLink Station
- Plans Progress for New BJC West County Hospital in Creve Coeur
- Groth Guides to the Neighborhoods of the City of St. Louis

@nextSTL

The next building to rise at @CortexSTL will be home to @techshop and more (FP Ave @ Boyle): <http://t.co/gSBT1ThBCu>

2 hours ago

Retweet

when you look at a CITY, it is like reading the HOPES, ASPIRATIONS & PRIDE of everyone who built it. (highly recommended)

providing supporting #STL

SPACE ARCHITECTURE - DESIGN

4166 Manchester St. Suite 100 - STL MO 63110
314.532.4168 | spacearch.com
9-5 PM MON-FRI 10A-7P SAT

St. Louis
Cloudy
Humidity: 78
Wind: 8 km/h
69 F

2 Jul 2015 3 Jul 2015

63 F 80 F 66 F 82 F

Likes 18688
Followers

nextGUIDES

Facebook

Another view of big plans drawn up for Grand Center - Fox Theatre top-center. (bottom image by Lawrence Group)

3 days ago

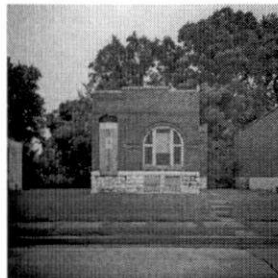
79 neighborhoods

5,603 photos

1 city

nextDEVELOPMENT

nextINSTAGRAM



Marine Villa Corner Building to be Rehabbed (3600-02 South J...)



Thursday, 2nd July 2015

Search



Development & Preservation Transportation Politics & Policy Media & Commentary About Advertise

Plans Updated for 500,000 SqFt WU/BJC at CWE MetroLink Station

June 22, 2015 Alex Ihnen Development & Preservation, Featured, Transportation
36 Comments



Renderings for a new 500K sf administration building on the Washington University School of Medicine and BJC Healthcare campus in the city's Central West End have been released. While a relatively straightforward structure, the investment immediately next to the district's MetroLink light rail station is big step forward.

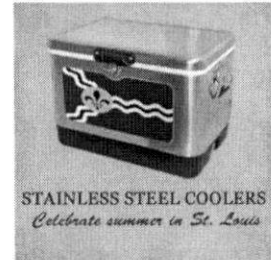
Back in 2012 we reported that the medical center would see more than \$1B in investment over the coming decade (latest renderings here). Already complete is the new BJC headquarters and Center for Outpatient Health at Forest Park and Euclid Avenues. Nearly complete is the McKinley Research building, a new health and safety facility, and the massive 3,000 space parking garage and elevated walkway. The St. Louis College of Pharmacy has completed its new building on the prominent Taylor Avenue site.

With thousands of jobs likely to be added to the medical campus in the next few years, placing a half million square feet virtually on top of the light rail station is a good planning. The building will also be connected to the new parking garage via a 1/3-mile long sky bridge, which will connect to the larger campus walkway network.

A big expansion and renovation of St. Louis Children's Hospital is well underway (renderings). The university is contemplating converting the old Shriner's Hospital and Central Institute for the Deaf into student housing as a replacement for Olin dormitory.

nextPOPULAR

-  STL COP Confirms 190K SF Multi-Use Building Set to Break Ground
-  Salvation Army Continues \$60M Midtown Project with Phase III
-  Plans Updated for 500,000 SqFt WU/BJC at CWE MetroLink Station
-  Plans Progress for New BJC West County Hospital in Creve Coeur
-  Groth Guides to the Neighborhoods of the City of St. Louis



St. Louis
Cloudy
Humidity: 78
Wind: 8 km/h
69 F

2 Jul 2015	3 Jul 2015
63 F 80 F	66 F 82 F

@nextSTL

@rlippmann This is what's confusing...3 of 4 possible NGA sites are in Missouri, but state is willing to pay \$117M to subsidize City site?

12 mins ago

Retweet

Likes **18688**
Followers


Facebook

Salvation Army continues to invest in Midtown St. Louis:

1 week ago

nextGUIDES

79 neighborhoods
5,603 photos
1 city



nextDEVELOPMENT

nextINSTAGRAM

